



**NEWSLETTER OF
LAKELAND LUTHERAN
CHURCH
DECEMBER 2021
JANUARY 2022**

Cold Lake, Alberta
780-639-4673
Church Office Hours:
Tuesday - Friday 9.00am-12pm
lakelandlutheran@telus.net
Pastor: Rev. AnnE Zimmerman
780-201-0806
PastorAnnE@lakelandlutheran.com



Rev's Words:

Prepare the way for the coming of the baby born in Bethlehem

Today the trip from Nazareth to Bethlehem takes less than two hours by car, it is only 134 km. The road to Bethlehem can, however, be very long and difficult.

For Mary the trip was a great strain. She was pregnant and nearing her time of delivery, Joseph and Mary probably had a donkey and we can assume that Mary rode most of the way. Joseph would be keeping a wary eye on both the road and his young wife. Perhaps, on a good day, they would travel for most of the daylight hours. The journey could have taken several days. Along the road they would have to deal with dust, wind, rain, and the burning sun. There was always danger from robbers and from the army of their conquerors. We often ignore the hardships of the journey and seldom stop to think of the weariness or the fear that they must have experienced.

It is important to note that the other main characters involved in the story also had to make a journey. Shepherds went to the stable and later the wise ones came from a far land. As we travel through the Advent season on our own roads to Bethlehem, what is our expectation and our hope?

In our modern times our lives change daily. On our own roads to Bethlehem, what is our expectation and our hope? It is hard to hear the voice of God in our noisy, crowded world. If we make the journey in our hearts, we can spend Christmas on holy ground. We can journey to Bethlehem.

But is it possible, in spite of all our good intentions, to miss the trip. Herod the king stayed at home, where he was so engaged by the routine of the day and his concern for the things that surrounded him that he missed the journey. He saw no star that night, nor did he hear the singing of angels. Herod never found the stable and he did not see the holy infant.

Are we Bethlehem-bound during this time of preparation, or are we going to miss the real meaning of the season? How do we prepare ourselves? Are we loaded down with burdens as the donkey was? Do we carry with us expectations and lists of things that must be done? Our trip, like the journey for Mary, also has its hazards and dangers. Are we totally caught up in the shopping, wrapping, baking and decorating? Especially being still done in a pandemic time? We may be so focused on the many tasks that we miss the point of the trip. Do we harbour fears that take the joy out of the journey? Are we afraid of the distractions and the unknowns that lie in wait by the road to rob us of our joy?

Unlike Scrooge, few of us say "bah humbug" at Christmas. None of us are like the Grinch who set out to steal Christmas. But the road to that holy stable is not a smoother or easy one. We hear the words "Merry Christmas" at every turn on our way. "Have a Merry Christmas, Ho! Ho! Ho!" But is that the real message of Christmas? Is that the song of the angels? Is that why the star shone? Angels never sang of merriment; they sang of peace and joy.

There is a woman named Edith. Edith never wished anyone a Merry Christmas. But to those who knew her it was not at all strange. Edith loved Christmas and cleaned, polished, baked, and trimmed her tree. She knew what was special. To her friends and family she said, "I wish you Christmas." And in those words she wished peace, joy, love and hope to all. Edith had it right. Christmas should be more than merriment and glitter.

Advent calls us to hope, peace, love and joy--the real journey of Christmas.

God of hope, we pray as we journey that we may know Christmas. May we understand faith and gratitude for our journey together to the place where the Christ Child lay.

Blessings to you all as we travel together, Pastor AnnE

*with thanks to the writings of Betty Radford



December 2021 Message for Congregations and Lay and Rostered Leaders

Dear friends and family in Christ--

In the reading from Luke for the first Sunday in Advent, we are confronted with a portion of Luke's apocalypse. It is a reading where Jesus offers up images that we associate with the end. Perhaps it is the end as it pertained to the Jerusalem temple. Or maybe Christ's words were meant in a more far-reaching sense, pointing to the end of all things. We have often read these words in such a way. It is hard not to. These words speak of the Son of Man coming upon a cloud and of creation itself showing signs of the coming of the end. We can get so caught up looking for what is coming, at watching for the signs of this final time, that we don't hear the good news.

And, yes, there is good news, even though it seems overshadowed by these visions of rapture that dance through our heads. There is good news, even as Jesus warns us to hold fast against what is coming. The good news is this. The kingdom of God is near or in some translations, at hand. Now, that could be read as part of the foreboding nature of this text. The Kingdom of God is near? Yikes, I better shape up. God will be here soon. But it is also good news. The kingdom of God is near. God will soon usher in God's kingdom and will make everything right.

But I will offer to you another thought on the word "near". The word in this context is the Greek *eggus*, which can mean nearby, both in time and in position. The Kingdom of God approaches and will soon be here. But another use of the word is to indicate nearness as a way of accessing God. The Jews, for example, were near to God. God was their God, and they were God's people. The nearness wasn't about God soon arriving. It was about having God close at hand, able to be accessed. Israel saw their relationship with God in such a way. God wasn't distant. God wouldn't show up one day. God was with them already.

This understanding situates itself well with the story of the Israelites all through their history. God was not a distant God to them. God was a warrior, who fought for them. God was the one who helped Moses split open a sea or gave David the power to overcome Goliath. God brought the people together as a nation and God, they believed, abided in the temple. That was where God was to be found. That was the center of all things.

Now, we might not agree with their cosmology, or the idea of God being limited to the temple in any way, but there is something so intriguing and beautiful about God being near like that, as near as a family member or friend. One to reach out to and take comfort in and gain strength from. We might not think of God that way but consider that this was the same God who came down in the person of Christ, God incarnate, to walk amongst God's people. Jesus lived and ate and wept and laughed and healed and taught and slept and died right along with us. He was as near to his disciples as I am when I sit with my family at the end of the evening. He was near and he loved them, and they loved him.

The nearness of God does not stop there. Even after Jesus departed again from his disciples, he gifted the Holy Spirit to the disciples and to the world. That is the Spirit who sustains us and guides us and who knows us more than we know ourselves. That is the nearness of the Spirit. As near to us as our own flesh.

To say that God's kingdom is near is to say that God is present in our lives. To say the kingdom is near is to say that even as we struggle with the realities of a harsh world, that seem only to get darker with the passing of time, God's kingdom is still near. We may wonder what can stand against such anger and hate, and yet the answer is as close as the Spirit. God can. God's kingdom, which we are called to serve, is that light which represents the very best that we can be, inspired and empowered to be such by the Spirit. The kingdom, which stands for mercy and hope, love and forgiveness, service and community, stands firmly opposed to the darkness all around us and it is near. As close to us as our own skin. It just has not been fully realized yet. But what a hope we have, knowing it is there. By knowing that, we can stand strong, because God is with us. We can persevere because the Spirit sustains us. The kingdom is near and so we can go on.

I can't think of a better way to start Advent. The Kingdom of God is near. God holds us fast. God, in Christ, came once to a manger in Bethlehem and the Holy was given flesh. The Christ will come again and then that which is near but not yet fully realized, will be in all its glory and the world, finally, will be made right.

During this Advent, may you know the nearness of God, now and throughout your days. May it give you hope.

Blessing and Peace in Christ,

Rev. Prema

*See what love the Father has given us, that we should be called children of God;
and that is what we are.*

1 John 3:1

Support when it was needed most

Occasionally, we get a stark reminder that pastors are human, too. Although these stories are seldom happy, they can help to bring us together. Sometimes they allow us to form new alliances with other congregations, to the benefit of both communities.

Lakeland, Cold Lake, AB, faced just such a situation in 2020 when **Joel Zimmerman**, the husband of **Rev. AnnE Zimmerman**, was diagnosed with an aggressive form of ALS (Lou Gehrig's disease) in spring. By October they needed to move to **Edmonton** to be closer to family and advanced medical support.

Lakeland had gone through vacancies and the absence of on-site spiritual leadership in the past, and the church and council were united that while Pastor AnnE was caring for one of their members—who just

happened to be her husband—she would remain as their pastor with full compensation, minus the housing allowance. Council agreed that finances should not be added to the list of challenges the family faced.

"We tragically lost our pastor a number of years ago, and it really drove home that sometimes our faith leaders and their families need us to support them in difficult times," council chair **Cheryl Benoit** explains.

"Since March 2020, Pastor AnnE had been doing our services online. But with her away we wondered what we would do, and if we as lay members could somehow continue that ministry. But then we got help. The synod office reached out and gave us options."

With the need for churches to suspend

services due to pandemic shutdowns, a larger number of churches were offering online and livestream services.

Bishop Larry Kochendorfer and his assistant, **Rev. Prema Samuel**, identified five churches that had a strong online presence, and Lakeland chose **Hosanna, Edmonton**.

"It was a wonderful match," Benoit enthuses. "At first, we just linked their website to ours and encouraged our people to join their live-stream service. But after a month we realized we would need more, and so we began working with Hosanna and the bishop's office to reach an agreement with Hosanna for pastoral care. And it worked out beautifully. They shared their rich musical program with us, which made the separation

from each other and our pastor less painful."

Hosanna took Lakeland into their hearts and made them feel part of their church family. Lakeland members took turns reading every second week, participated in worship skits, and some music, and were added to the prayers of the people. As time went by **Rev. Dr. James Hendricksen** and **Rev. Anna Thede** found other ways to include Lakeland's members, such as confirmation classes, Sunday school and membership needs. Hosanna would have done even more if they had been asked, but Lakeland was shy in asking as they knew how busy the new COVID procedures had made pastors and leaders.

"We also made a monthly contribution to Hosanna's budget, to offset some of their costs in supporting us," Benoit adds. "But the amazing thing is, it had no impact on our congregational giving. In fact, we surpassed our budget for this year. People just really stepped up to support Pastor AnnE and our entire faith community—making deliberate efforts to reach out to our people on a regular basis either by text, call or sidewalk visit.

Benoit reflects on their time with Hosanna. Pastor AnnE says, "God is good, all the time. And we have experienced his abundant blessing in the midst of COVID and illness. I feel so proud and blessed to be a part of this amazing group of people."

When COVID is over, it is hoped that joint ministry such as was shared between urban Hosanna and remote Lakeland Lutheran can be used to keep ministry alive and growing in churches that face congregational challenges due to geography, age or other circumstances. We are all the body of Christ, and when there is an itch in the middle of your back, it's wonderful to have a loving arm to scratch it.

—Richard Janzen

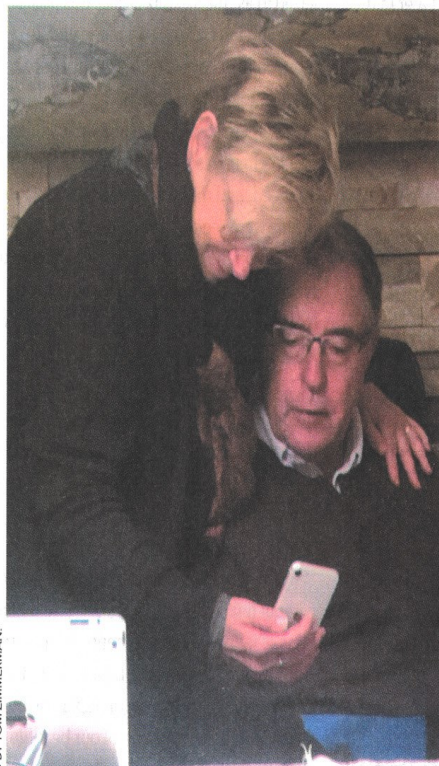


PHOTO BY TOM ZIMMERMAN.

Joel and AnnE Zimmerman watch a video of the congregation doing a drive-by blessing, with "God Be With You" playing.



Canadian Lutheran World Relief

November 19, 2021

Massive floods and landslides have devastated parts of British Columbia, destroying roads and leaving several mountain towns isolated. At least three people are missing, some 18,000 people are displaced and authorities expect death tolls to rise.

CLWR invites you to pray for the people of British Columbia, and to consider making a gift to support recovery efforts. As we move to quickly identify partners well-positioned to respond effectively, your gift will provide emergency support and hope for recovery.

CLWR is accepting donations now on its website at clwr.org/BCfloods. Donations can also be made by phoning our office at 1.800.661.2597 (Monday to Thursday, 9:00 - 16:00 CDT) or by mailing a cheque to 600-177 Lombard Avenue, Winnipeg MB R3B 0W5.

Thank you for responding in love to this emergency.

Blessings,
Karin Achtelstetter
rector
Canadian Luther-

- Executive Di-
an World Relief



*May the Lord repay you
for your kindness
May you be richly
rewarded by the Lord,
the God of Israel,
under whose wings you have
come to take refuge
Ruth 2:12*

Thank you to all who so graciously provided necessary items, supports, drives and care to a young mom who recently arrived to Cold Lake. You have made a difference!

Worship Service Lessons for December

Sunday Dec 5 – Malachi 3:1-4; Luke 1:68-79; Philippians 1:3-11; Luke 3:1-6

Sunday Dec 12 – Zephaniah 3:14-20; Isaiah 12:2-6; Philippians 4:4-7; Luke 3:7-18

Sunday Dec 19 – Micah 5:2-5a; Psalm 8 :1-7; Hebrews 10:5-10, Luke 1:39-45

Friday Dec 24 – Isaiah 9:2-7; Psalm 96; Titus 2:11-14; Luke 2:1-14

Saturday Dec 25 – Isaiah 62:6-12; Psalm 97; Titus 3:4-7; Luke 2:8-20

Sunday Dec 26 – 1 Samuel 2:18-20, 26; Psalm 148; Colossians 3:12-17; Luke 2:41-52

ADVENT WORSHIP INFORMATION

Services in Advent:



Nov 28th ADVENT I, 10am Lay led Worship

Dec 5th ADVENT II, 10am Worship with Communion

Dec 12th ADVENT III, 10am Worship with Intergenerational Advent Art Expression

Dec 19th ADVENT IV, 10am Worship with Communion; 4pm [Blue Christmas Service](#)

Dec 24th , 11am Long Term Care Service; 5pm Candlelight Service

Dec 25th, 10am Worship with Communion

Dec 26th, 10am Worship Service Led by Anne Tucker (Scripture & Carols)

Here is the order for the lighting of your Advent candles.

Nov 28th one [blue](#) candle for HOPE

Dec 5th two [blue](#) candles for PEACE

Dec 12th two [blue](#) candles and one [pink](#) candle for JOY

Dec 19th three [blue](#) candles and one [pink](#) candle for LOVE

Dec 24th all the candles are lit including the white one as your Christ Candle.



Family Prayer as you light your Advent Wreath

First Sunday of Advent.



We praise you, O God, for this evergreen crown that marks our days of preparation for Christ's advent. As we light the first candle on this wreath, rouse us from sleep, that we may be ready to greet our Lord when he comes with all the saints and angels. Enlighten us with your grace, and prepare our hearts to welcome him with joy. Grant this through Christ our Lord, whose coming is certain and whose day draws near. Amen.

Second Sunday of Advent.

We praise you, O God, for this circle of light that marks our days of preparation of Christ's advent. As we light the candles on this wreath, kindle within us the fire of your Spirit, that we may be light shining in the darkness. Enlighten us with your grace, that we may welcome others as you have welcomed us. Grant this through Christ our Lord, whose coming is certain and whose day draws near. Amen.



Third Sunday of Advent.



We praise you, O God, for this victory wreath that marks our days of preparation for Christ's Advent. As we light the candles on this wreath, strengthen our hearts as we wait the Lord's coming in glory. Enlighten us with your grace, that we may serve our neighbours in need. Grant this through Christ our Lord, whose coming is certain and whose day draws near. Amen.

Third Sunday of Advent.

We praise you, O God, for this wheel of time that marks our days of preparation for Christ's Advent. As we light the candles on this wreath, open our eyes to see your presence in the lowly ones of this earth. Enlighten us with your grace, that we may sing of your advent among us in the Word made flesh. Grant this through Christ our Lord, whose coming is certain and whose day draws near. Amen.



Education



YOU'RE ALL INVITED...

To participate in the Lakeland Lutheran Church presentation of
"The Christmas Story: an Intergenerational Art Show."

Sign up with the Education Committee (Bernie, Marlene or Jo) or email
jopetterson2@gmail.com by Sunday 7th November.

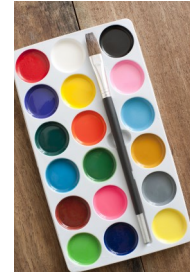
Create a piece of art in any medium that represents your assigned verses in
the Christmas Story and present your finished work (or have someone pre-
sent it for you), on Sunday December 12, as part of our annual "Christmas Concert". Please let us
know if you need supplies, we can help. Late registrants will be included in some way so don't
worry if your flash of inspiration comes after November 7!

Important Dates:

November 7—Sign Up and receive your verse

November 28—Bring artwork to church (or drop off before)

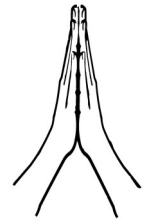
December 12: Art Show during church service



Worship

Prayer Chain :

We are blessed in our fellowship to have the gift of intercession and people that are
willing to pray and praise in circumstances in our daily lives. Prayer requests can be
emailed to Anne Tucker at a_tucker@telus.net or you can call or text her on 780-812-
0208. The request will then be fanned out to our praying volunteers. Please know that
requests to the prayer chain are kept confidential and no request is considered too big
or too small for prayer. If you wish for your prayer request to be continued please send
a second request. Thank you for your support of this ministry. If you wish to volunteer
to be on the prayer team please let Anne know.



YOUR OFFERING

You are now able to e-transfer money to the church.
If you wish to do this please use the following email to e-transfer
from your account.

financialsecretary@lakelandlutheran.com

You can also drop your offering at the church during normal office hours or mail to us at Box 456,
Cold Lake, AB T9M 1P1. Thank you for your continued support of our church.



Reverse Advent Calendar

Please remember to take your grocery bag, once you have completed the calendar items, to the church on or before Christmas Eve to be blessed and then delivered to the Cold Lake Food Bank.

Dec 1	Dec 2	Dec 3	Dec 4	Dec 5	Dec 6	Dec 7
Box of Cereal	Peanut Butter	Box of Stuffing Mix	Box of Instant Potatoes	Macaroni & Cheese	Canned Fruit	Canned Tomatoes
Dec 8	Dec 9	Dec 10	Dec 11	Dec 12	Dec 13	Dec 14
Canned Tuna	Jam or Jelly	Jar of Applesauce	Coffee	Tea	Canned Peas	Box of Crackers
Dec 15	Dec 16	Dec 17	Dec 18	Dec 19	Dec 20	Dec 21
Package of Rice	Package of Oatmeal	Package of Pasta	Canned Spaghetti Sauce	Chicken Noodle Soup	Tomato Soup	Canned Corn
Dec 22	Dec 23	Dec 24				
Canned Mixed Vegetables	Canned Carrots	Canned Green Beans				

Before You Come To Church

Covid-19 numbers in Cold Lake and the M.D of Bonnyville remain high and although we are still able to continue with in-person worship we need to be vigilant in following all AHS guidelines on social distancing and mask wearing whenever we are in the church. We must also continue to ask the following Risk Assessment questions before we actually come into the church building in order to reduce the risk of Covid transmission.

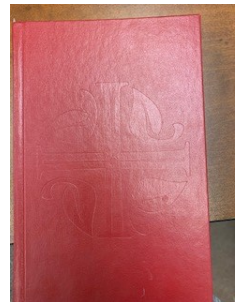
1. Do you have any of the following symptoms which are new or have worsened over the last few days, cough, fever, shortness of breath, difficulty breathing, soar throat, and/or runny nose?
2. Have you returned to Canada from outside the country (including the USA) in the past 14 days?
3. Have you recently been in close contact with anyone who has tested positive for Covid-19?

If you have answered YES to any of these questions please stay home for your safety and the safety of all those in our congregation.

Please remember you are not permitted to enter Lakeland Lutheran Church if your are currently in isolation (have tested positive for COVID-19), or in quarantine (if you have travelled outside of Canada in the last 14 days).

HYMNALS

If anyone would like a Hymnal to take home so that you can follow our Sunday Service please contact Kathy in the office 780-639-4673 and she will arrange for you to sign one out.



Driver Program



If you require a ride to any Church activity, or can provide a ride, please contact the office 780-639-4673



A Good Friend

Look at the joy one enjoys taking a journey of discovery and finding a dear friend in the mix. Wonderful to visit our longtime friend and member of Lakeland Lutheran Church.

Sylvia Armbruster - she is missed by us all. Although Sylvia lives in a lovely new home in Parksville, British Columbia (Vancouver Island) she finds memories remain of the many dear friends in Cold Lake.

YOU ARE MISSED SYLVIA - live well and God bless you. Visit us whenever possible.

Offering Envelopes

Please note that the offering envelopes for the 2022 year will be placed in your mailbox in December. Please watch for them and pick them up. If you do not already have envelopes and would like some, please talk to Anne Tucker. You can contact Anne by texting 780-812-0208 or email a_tucker@telus.net. Income tax receipts are issued for all donations to our church, these will be in your mailbox in January.

Offerings can be donated by the envelope system, through the PAR (pre authorized automatic withdrawals from you bank account) system, or through etransfers. Thank you for your continued faithfulness.

Directed Giving

Breakdown to the end of October 2021.

Cold Lake Food Bank \$4905
Synod \$550
John Howard \$260
On Eagles Wings \$75
Discretionary \$50

Hosanna Lutheran \$1125
Seminary \$425
Pastor Rude \$150
Campus Ministries \$450
Fall Supper \$3635.25

CLWR \$2090
Refugee Support \$175
Adopt a Family \$250
Lac La Biche \$50

Thank you for your generous gifts to others

Anne Tucker
Financial Secretary

BIRTHDAYS and ANNIVERSARIES in DECEMBER & JANUARY



Dec 29 – Molly Pedersen

Dec 31 Cal Gerber

Jan 8 – Laurie Pierce

Jan 9 – Anne Tucker

Jan 16 – Lisa Scharfenbu

Jan 21 – James March

Jan 22 – Josephine Sinclair (105)

Jan 24 – Joy Mitchell

Jan 27 – Nancy Gerber (75)

Jan 29 Dana Petterson (30)



Dec 23 – Bernie and Keith (15yrs)

Dec 30 – Helen and Tom Stolfa (50yrs)

Jan 12 – Charlotte and Heinz

CHECK OUT THE DECEMBER 2021 & JANUARY 2022 CALENDARS FOR ALL ACTIVITIES

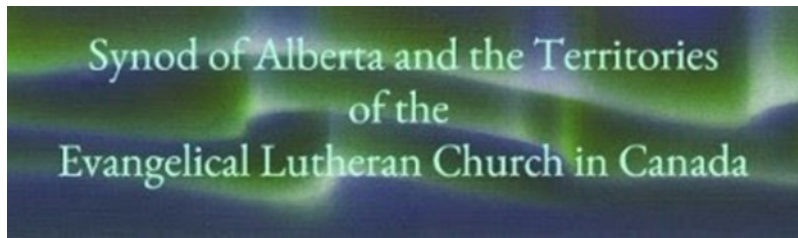
Are we missing anything from our newsletter? Or is there something you wish we would have in our newsletter on an ongoing basis?

Please make sure that any inclusions for the February Newsletter reach the church office by **JANUARY 24th.**

Assumption Jnr/Snr High School Christmas Band Concert.

For anyone interested in viewing the Christmas Concert it will be streamed on Facebook and YouTube at 4.30pm on Thursday 9th December.





Spirit-Led Leadership

Innovative Tradition

Hope-Filled Discipleship

Collaborative Partnerships

Advent 2021 - Faith Painting Online

taking place Sunday, December 5, 2021

The following notification is being sent from the Synod office on behalf of Bishop Larry.

Advent is the season of darkness, of waiting and anticipation, of preparing for the celebration of Christ's first coming, and of readying our hearts for Christ's coming again.

The Worship and the Arts Ministry Team invites you to participate in a paint night where you will be guided in the creation of a painting of the Nativity. Join with others across the Synod to wait, anticipate, and prepare by creating a Nativity painting for your own home, or as a gift.

All skill levels are welcome.

This free event will take place Sunday, December 5, 2021, from 3:00-4:30 pm. For more information and to register, click [here](#).



Blessings,
Marla Berg
Office Administrator
Synod of Alberta and the Territories

**Minutes from October 20, 2021 7:15pm Lakeland Lutheran Church Council
Meeting at the church**

Approved November 24th, 2021

		Email Address	Present	Excused	Minutes Fwd.
President	Cheryl Benoit	cbenoit4u@yahoo.com	Y		
Vice-President	Richard Davis	ppaulellard@live.ca		Y	
Secretary	Anastasia Radke	Aradke2016@outlook.com	Y		
Trustee	Linda Klinger	covan@telusplanet.net	Y		
Trustee	Helen Runke	harunke@telusplanet.net	Y		
Trustee	Cornel Wollman	clwoll@telusplanet.net	Y		
Trustee	Keith Scheidt	kscheidt@persona.ca	Y		
Pastor	AnnE Zimmerman	pastorAnnE@lakelandlutheran.com		Y	
Worship	Helen Flaming	hflaming@telus.net			N/A
Education	Bernie Hartman	berniehartman@persona.ca			N/A
Witness	Dorothea Mathews	dorothea.mathews@yahoo.com			N/A
Service	Gail Chernesky	billac@telusplanet.net			N/A
Support	Cornel Wollmann	clwoll@telusplanet.net			N/A
Treasurer	Kathy Pedersen	lakelandlutheran@telus.net			
Fin/Sec	Anne Tucker	a_tucker@telus.net			N/A
Facility	Bill Chernesky	billchernesky2020@gmail.com			N/A
Mutual Ministry	Keith Scheidt	kscheidt@persona.ca			N/A
Stewardship	Keith Scheidt	kscheidt@persona.ca			N/A
LLC Office	Kathy Pedersen	lakelandlutheran@telus.net	N/A		N/A

Call to Order 7:15 PM Cheryl B

Approval of Draft Minutes from Previous Council Meeting September 15th 2021

Moved: Keith Second: Cornel Carried

Reports:

Treasurer Report: attached

Bill has volunteered to take over the Interim Treasurer position if no one is available in the meantime.

Council approved to ask Kathy Pedersen to fill Treasurer position until next Annual Meeting in February 2022. She will have no signing authority. Council will ask if she is interested in additional hours.

Financial Secretary Report: attached

1. Pastor's Holiday
2. Mutual Ministry, Council and Committees to meet for feedback from Pastor AnnE.
Keith will find out what is available from the Synod website and documentation and format in respect to feedback. Will aim for January.

Reflection on Bylaw 10. Discussion was held about Capital Fund and Long Term Maintenance Funds. Capital Fund spending is case by case, approval pending from input from council and approval by congregation. If the need arises for repairs and maintenance, Council will recommend to congregation for their approval to take money from the Capital Fund. Final approval will be made by the congregation.

Council can ask Anne Tucker to talk to the families that give to the Capital Fund right now.

Pastor AnnE's Report: attached

Discussion about the calendar Pastor AnnE's holiday and days off.
More holiday days still outstanding for Pastor AnnE to take until year end.
Mutual Ministry will look with Pastor AnnE for holiday time.

Worship Committee: Report attached

Witness and Outreach: Report attached
Planning to give funds to adopt a family between now and year end .

Service and Care: Report attached

Education: Report attached
Ask for budget for next year

Support and Maintenance: Report attached
Cheryl asked to have estimates for different projects on an Excel sheet.
Keith will help with Spread sheet (shingles, furnaces, lights etc.).

Stewardship: - no meetings

Facility Coordinator: Report attached

Input from Council:

Anastasia – Liaison to with office administrator

Keith – Liaison to Education/ mutual ministry

Linda – Liaison for Worship

Helen – Liaison to Witness and Outreach

Cornel—Liaison to Support and Maintenance and facility coordinator

Cheryl – Treasurer and Office Administration

Richard – Service and Care

Next Council Meeting November 24th, 2021 at 7:15pm at church

Closing Prayer

Note Draft meeting minutes will be emailed to council members for feedback on any errors or omission. Once approved, the minutes will be posted on the bulletin board by the office door along with a copy of the reports and applicable memorandums.